



www.tedtronix.pl

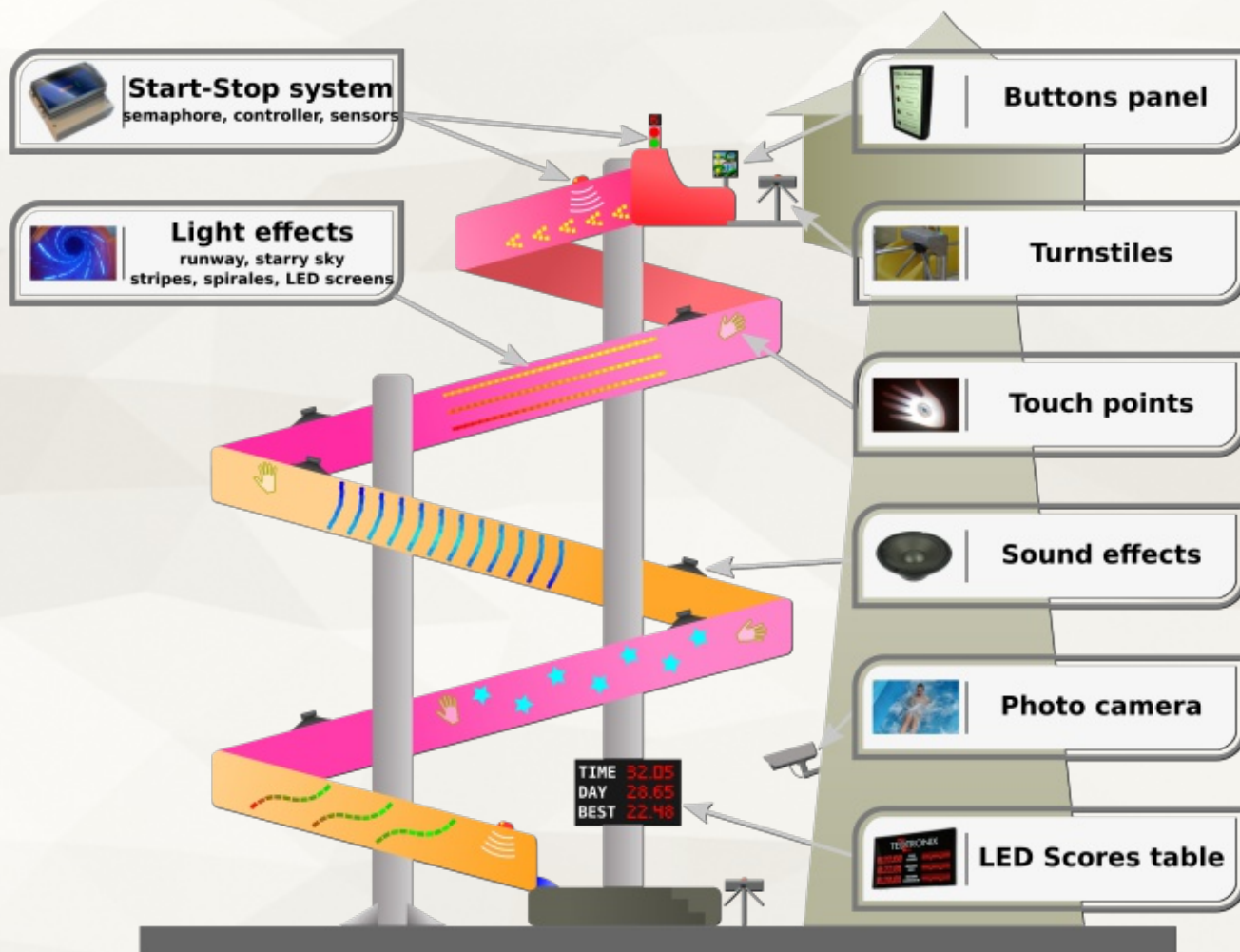


We are a manufacturer specializing in the production of widely understood multimedia systems for water slides, industrial electronics, drivers, LED displays and LED lighting.

Many years of experience and a number of completed projects guarantee the highest quality. We have been operating on the market since 1990 and we are constantly developing, investing in the latest technologies.

We offer comprehensive services including not only delivery, but also assembly and service of our equipment. Our products can be adapted according to individual needs.

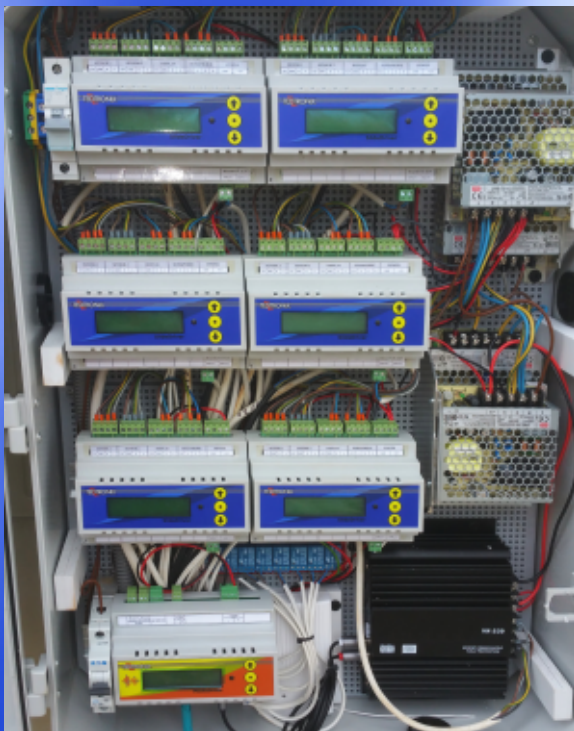
Get to know our offer and join our customers.





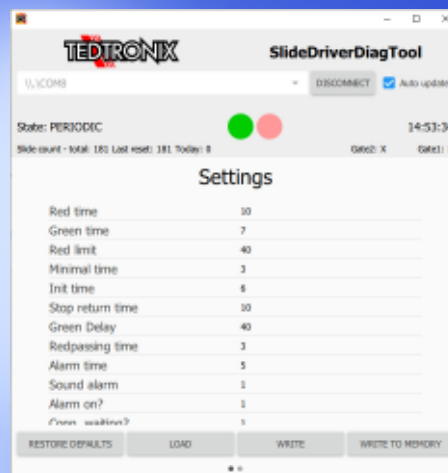
The SlideDriver driver enhances safety on slides and the comfort of its users. Its task is to control the lighting of red and green light cyclically or depending on the activation of motion sensors placed on the slides.

The controller uses an advanced, reliable sensor communication system. This ensures that the controller detects any irregularities and informs the staff accordingly.



Features

- Slide time measurement
- Speed measurement
- Count touch points collected during slide
- Turnstiles control
- Alarm notification
- Display on the scoreboard
- Slides counter
- Diagnostics tools



Operating modes

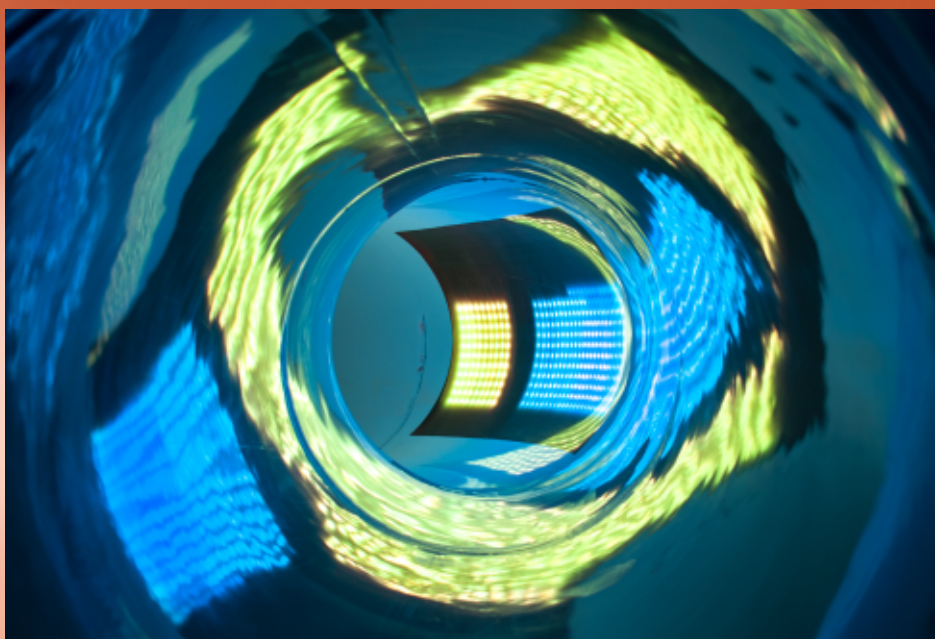
- Cyclic mode
- 1 sensor
- 2 sensors mode





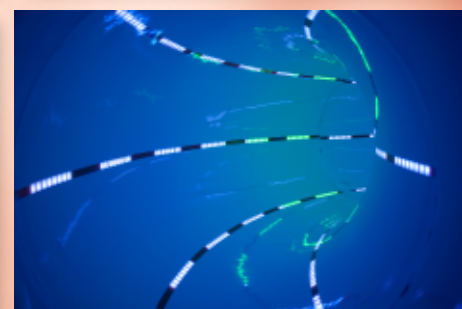
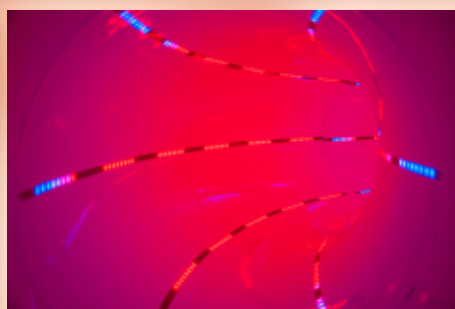
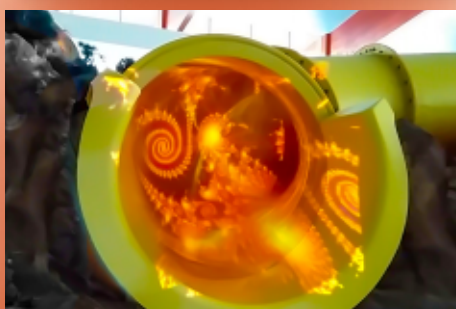
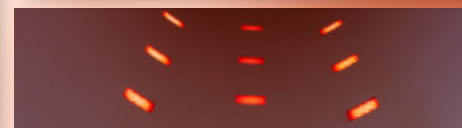
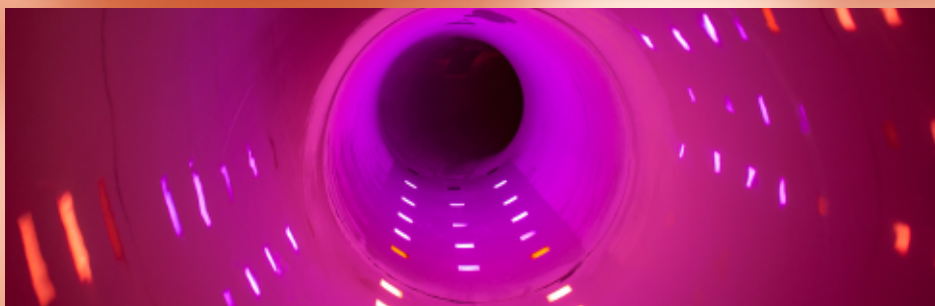
The multimedia driver displays graphics and animations on the LED elements, plays sound and receives information from the touch panel and SlideDriver.

The driver works with scoreboards to display the results of interactive games.



Effects and features:

- LED Screen
- Stripes, circles, spirals
- Runway
- Stroboscope
- Interactive games
- Projector LED



LED Semaphore

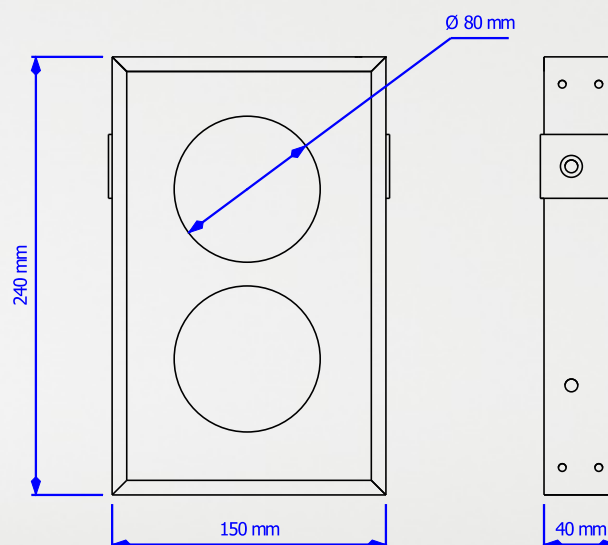


High quality industrial led semaphore consisting of 74 LEDs.

Excellent visibility. Resistant to harsh working conditions.

Different ways of mounting - from the back or from the side.

Works excellent with SlideDriver.



Symbol	XSEMAFOR
Viewing angle	Dimensions
Number of LEDs	2x37
Power supply	12 V DC
Max power	3W
Dimensions	15 x 24 x 4 cm

Touch panel



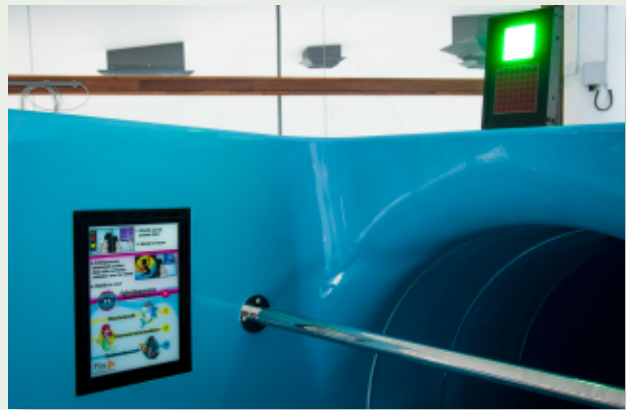
The touch panel allows you to select light and sound effects that will be played during the slide.

Touch panel with semaphore

- possibility of printing any graphics
- static buttons
- connection to the semaphore

Interactive LCD touch panel

- change any graphics from a file
- visual effects





The scoreboard operates with the SlideDriver. Our scoreboard has a high resistance to environmental factors.

Thanks to the possibility of measuring the time of the slide, the fun on the slide becomes even more interesting. Participants can compete with each other and try to beat the record of the day.

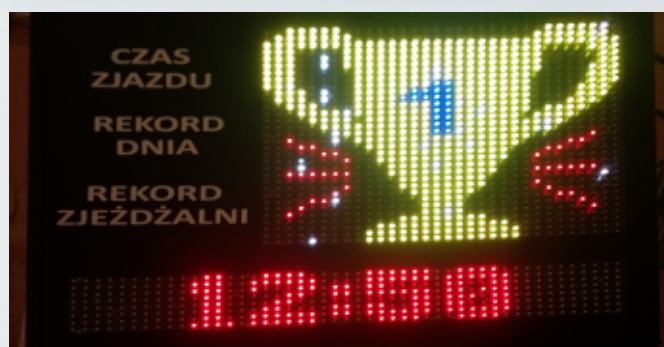
The display can show:

- slide time,
- record of the day,
- the best slide time,
- speed,
- number of collected points,
- colorful animations.



Interactive games

Interactive game "Paintball" consisting of a set of touch points with colorful shells scattered in different places. Each time the seashells change colour and weight of the scores. The number of collected shells is presented on the scoreboard.



Slide camera

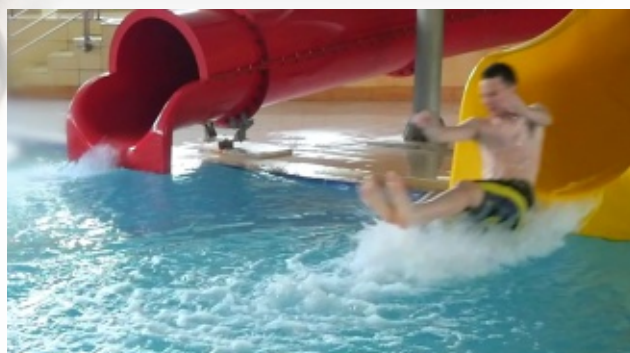


Slidecamera is a system that takes pictures and videos of users of various attractions, such as theme parks, pool slides, etc.

The product consists of camera, photo number LED Display and a unit for browsing, printing and sending images to users.

The system can take pictures of people on the move directly in front of the camera or from a distance.

During the slide, the camera takes several photos and selects the best for the user.



Video

The Slidecamera system has a recording function. This allows you to keep great memories in the shape of a video. The user can send a photo or video directly to the email box or share it with social media.



Customer Service System integrations

Our slidecamera system can be connected to existing customer service system by using RFID wristbands or TCP/IP communication protocol.



Photo overlaying

The software is equipped with a module for overlaying taken pictures on a predefined background. For example, the photos of the participants of the pool slide are placed on the background of a waterfall. Advanced processing algorithms "cut" people from the photos so that the background of the slide is not visible.



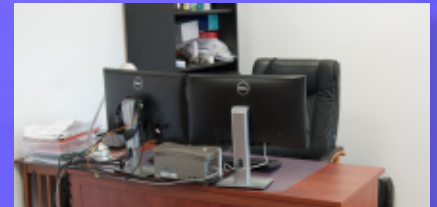
Design & Engineering

Tedtronix has an experienced, talented and innovative staff of professional software & hardware engineers, product designers and testers.

Each product is designed from scratch by our specialists.

We create the PCB project, all software, technical drawings and production processes.

We use the best tools and the newest proven technologies.

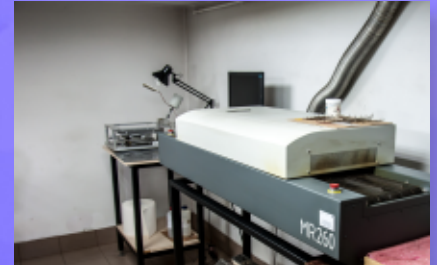


Manufacturing

Each of our products is manufactured in our factory from scratch.



We have a suitable machine park, CNC equipment and an automated SMT line.

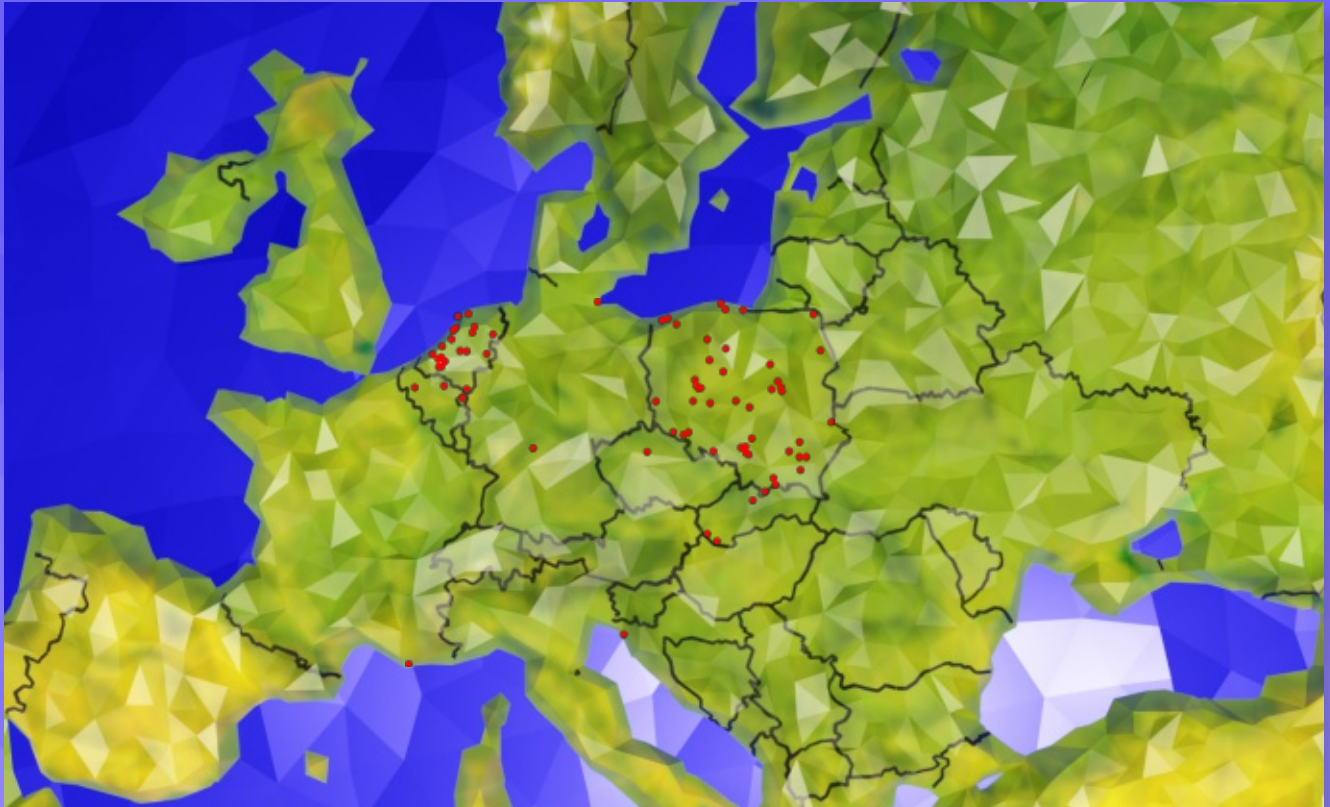


Installation & after sales services

Tedtronix has experts ready to install all our products all around the world.

Our after sales services include service and maintenance of all our products and installations.





- Wałbrzych, Poland
- Warszawa Moczydło, Poland
- Żoliborz Warszawa, Poland
- Żary, Poland
- Ronse, Belgium
- Veluwecamping 't Schinkel, Netherlands
- Katowice Kosciuszki, Poland
- Poznań Malta, Poland
- Świecie, Poland
- Szklarska Poręba, Poland
- Koziegłowy, Poland
- Sokół małopolski, Poland
- Barneveld Oosterbosbad, Netherlands
- Czarnogóra, Poland
- Katowice Hallera, Poland
- Ciechanów, Poland
- Gorzelanny Pokrzywna, Poland
- Błonie, Poland
- Kołobrzeg, Poland
- Warszawa, Poland
- Chełm, Poland
- Chojnice, Poland
- Decin, Czech
- Swarzędz, Poland
- Breda, Netherlands
- Waterwyck, Netherlands
- Oestgeest Poelmer, Netherlands
- Groenoord, Netherlands
- Mol, Belgium
- Zakopane, Poland
- Emmen, Netherlands
- Białogard, Poland
- Inowrocław, Poland
- Jarocin, Poland
- Zawiercie, Poland
- Mrzeżyno, Poland
- Wąłtopia, Poland
- Veľky Meder, Slovakia
- Gorzyce, Poland
- Warszawa Wodnik, Poland
- De Lockhorst Sliedrecht, Netherlands
- Wonnemar-Marktheidenfeld, Germany
- Kurza góra, Poland
- Suwałki, Poland
- Warszawa Powsin, Poland
- Banakker, Netherlands
- Bergen, Netherlands
- Legionowo, Poland
- Besenowa, Slovakia
- Les Mimosas, France
- Bieruń, Poland
- Andrychów, Poland
- Aquapark Fala, Łódź, Poland
- Zambrow, Poland
- Suchy Las, Poland
- Ede, Netherlands
- Śrem, Poland
- Uniejów, Poland
- De Dukker, Netherlands
- Tychy, Poland
- Tarnowo Podgórne, Poland
- Nakło Nad Notecią, Poland
- Texel, Netherlands
- Domazlice, Czech
- Reda, Poland
- Poreč, Croatia
- it Gren, Netherlands
- Moesberg, Netherlands
- Hengelo, Netherlands
- Ruda Śląska, Poland
- De Does, Netherlands
- De Ganzewiel, Netherlands
- Białystok, Poland
- Limanowa, Poland
- Rawa Mazowiecka, Poland
- Kolbuszowa, Poland
- Sopot, Poland
- Karpacz, Poland
- Ostsee Therme, Scharbeutz, Germany
- Maarsseense Plassen, Netherlands
- Samorin, Slovakia
- Otterveurdt, Netherlands
- Echt, Netherlands
- Oświęcim, Poland
- 't Veld, Netherlands
- Pogorzela, Poland
- Strzyżów, Poland
- Blauwe Golf, Netherlands
- Lublin, Poland
- Octopus, Netherlands
- Szczawnica, Poland
- Szaflary, Poland
- Tijenrann, Netherlands
- Krynica Morska, Poland
- Łazy, Poland
- Oborniki, Poland
- Pampel, Netherlands

TEDTRONIX



www.tedtronix.pl - 32-700 Bochnia ul. Rynek 10, POLAND
tedtronix@tedtronix.pl